



GALLIGDI GLOBAL ENGINEERS AND EXPERTS COMPANY

What is Geexco?

GEEXCO is a US based consulting company with a global scope. It is an international company with a strong internal and external growth, working with multilateral donors, international institutions, humanitarian organizations, governmental agencies, and communities to design, implement and assess innovative development projects. GEEXCO is a global network of experts and engineers offering engineering, project structuring and operations' services to solve the world's most complex challenges.

GEEXCO - Creating Opportunities

Based in Takoma Park in Maryland, the company relies on an international network of experts, partners and subsidiaries that helped implementing complex studies and projects worldwide. In this regard, GEEXCO is committed to contribute creating a better world through expertise, engineering and technical assistance to its partners and clients worldwide.



GEEXCO - Creating Opportunities

GEEXCO work ethics is based on trustful relations and straight-forward processes which help it learn alongside its clients and partners while it seizes practical knowledge applied to project management with an independent, creative and realistic approach. GEEXCO offers a wide range of expertise and engineering, planning, socioeconomic and environmental services. Our experience includes all phases of project delivery from the planning phase to the implementation services.

GEEXCO – Dynamic in a World of Change

GEEXCO has a sound track record of providing effective solutions to the challenges in the global consulting market. Leading development agencies, ministries and public clients have entrusted GEEXCO with helping them to manage projects financed through bilateral and multilateral funds. Working in cooperation with stakeholders in government, the private sector, NGOs and citizens' groups, GEEXCO balances innovation and reliability to meet local needs. The company's international recognition as a dependable partner is incorporated in a set of values which focuses on performance, innovation, credibility and quality.

GEEXCO Consulting company provides outstanding services in strategic business areas which result from adapting to market developments. This change process is supported by GEEXCO units, offices and subsidiaries worldwide. Hence, new themes are continuously integrated into the existing GEEXCO portfolio. Each theme is documented in a factsheet that portrays GEEXCO services and project references.



History

Founded in 2014 by a group of US-resident experts and engineers with longstanding experience in development issues, GEEXCO is being built a reputation of not just meeting, but exceeding its client's expectations. Our staff focuses on setting high standards for all projects, no matter how challenging, to ensure that the quality of our final products speak for themselves. GEEXCO founding Principals are actively involved in projects and they are dedicated to providing stellar service through quality planning and creative solutions

Originally aimed to provide bilateral and multilateral donors with technical support in their projects implementation in developing countries, it eventually turned out to become an effective consulting firm providing international and institutional related services worldwide.

Sectors -Themes & Services

GEEXCO Consulting company provides outstanding services in strategic business areas which result from adapting to market developments. Hence, new themes are continuously integrated into the existing GEEXCO portfolio. Such themes are often multi-disciplinary in nature so that related concepts are elaborated by GEEXCO teams from various departments who bring a variety of competences and expertise to the table. It typically portrays challenges and GEEXCO services in the field in question and refers to selected projects GEEXCO assists or assisted during implementation in a specific country or region.

The expertise of GEEXCO covers a broad range of thematic sectors, and it has gained considerable experience through both direct involvement in project operations led by itself, and collaborations with several partners.

GEEXCO main sectors of expertise include

Agriculture
Forestry and Fishery
Culture
Civil Society
Good Governance
Water
Sanitation
Energy
Environment

Industry
Handcrafts
Mines
Climate Change
Finances
Business
Administration and Public Policy
Capacity Building

Growth and Poverty reduction
Health and Education
Cities Management
Urbanism and Urbanization
Transports and Roads
Infrastructure
Civil Engineering
Buildings and Public Works



GEEXCO is a one-stop hub for all types of development projects, and coordination center providing tailored information and business support services. Customization of our services and the international reach of the group help us create additional value that benefits clients and members alike.

GEEXCO is renowned for the high quality of their methodological and managerial services throughout the project cycle. Using a global perspective, GEEXCO helps organizations to draft



⇒ Research and Socioeconomic Studies including other Development Consulting services

- ◇ Project and programme identification and formulation
- ◇ Project Implementation and management
- ◇ Ex-ante, mid-term and ex-post evaluations
- ◇ Elaboration and setting-up of M&E systems
- ◇ Monitoring of Projects and programmes
- ◇ Financial and Economic studies
- ◇ Planning and design
- ◇ Decentralization and local development Plans
- ◇ Resources Mobilization and local Tax Reforms Plans
- ◇ Municipalities and Local Entities Management plans

- ◇ Manuals of Procedure design
- ◇ Institutional Policies and Roadmaps design
- ◇ Environmental and Social Impacts Assessment
- ◇ Resettlement Actions Plan Development
- ◇ Marketing Research and Studies
- ◇ Marketing plans and Roadmap Design
- ◇ Business Plan Management
- ◇ Bidding Studies
- ◇ Sale and commercial expansion strategy design
- ◇ Rural Development Roadmaps (Agriculture, livestock, fisheries, environment, Mines, handcrafts and local industries)
- ◇ Master plans and Urbanism Schemes development
- ◇ Advisory services on policy and strategy
- ◇ Feasibility and pre-investment studies
- ◇ Environmental Impact Assessment
- ◇ Geographic Information Systems and Location studies
- ◇ Research and Development
- ◇ Master Plans Development

⇒ **Delegated Institutional management**

- ◇ Delegated Projects and Programs Management
- ◇ Community, public and private institutions Management and Advisory
- ◇ Delegated Investment Projects and Commercial structures Management
- ◇ Official / Public Events Planning and Management



- ◇ Technical Support to SME/ PMI management Units
- ◇ Technical Support to Farmers' organizations and holding structures
- ◇ Technical Support to Investors and economic operators
- ◇ Delegated management in Staffs Recruitment
- ◇ Audit and Organizational plans

⇒ **Trainings and Capacity Building**

- ◇ Administrative Management Techniques
- ◇ Management and Marketing Styles
- ◇ Management tools design methodologies
- ◇ Human Resources Management
- ◇ Human Development and personal effectiveness
- ◇ Strategic and operational guidelines
- ◇ Capacity building techniques

- ◇ Training and study tours
- ◇ Workshops and seminars
- ◇ Team building and coaching ;



⇒ **Audit, Accounting and Tax management**

- ◇ Balance sheet Development
- ◇ Accounting and Tax Audit
- ◇ Financial Audit of Management Supervision
- ◇ Institutional and Programmatic Audit
- ◇ Tax Engineering and Management ;
- ◇ Assistance and Tax advisory

⇒ **Communication / Information & Communication Technology (ICT)**

- ◇ Communication Strategies and plans development
- ◇ Communicational infrastructure and facilities implementation
- ◇ Communicational Structure Management
- ◇ Timestamp Project development and Implementation
- ◇ Data Center Project development and implementation
- ◇ Wiring and Networking Studies
- ◇ Delegated Management for ICT Projects and Programs

⇒ **Technical Assistance in Investments and Projects Fundraising;**

- ◇ Prospective in Public and Private Finances
- ◇ Business Plan Development
- ◇ Bidding Studies
- ◇ Business Model Management
- ◇ Consulting studies in investments
- ◇ Financial Engineering
- ◇ Technical assistance in Private and Public Projects Management;
- ◇ Financial institutions installment;
- ◇ Economic and financial studies development
- ◇ Bankable Public and Private projects development



⇒ **Civil Engineering, including technical assistance in Buildings, Roads and Public Works.**

- ◇ Site appraisal and site planning
- ◇ Construction management
- ◇ Technical Control in Public Works and Government Services;
- ◇ Technical Control in Roads, Dams and Buildings Construction;
- ◇ Technical Control in Sanitation and Water Sources Construction
- ◇ Technical Control in Hydraulic infrastructures and Equipment Construction
- ◇ Technical Control in Rural Engineering works
- ◇ Conduct of Topographic Surveys and Studies
- ◇ Topographic Maps Development
- ◇ Contracting / procurement, supervision

Vision and Core values

GEEXCO Vision

Our Vision is to be a unique network of highly specialized and recognized consulting companies contributing to the objectives of sustainable development and poverty reduction and being the partner of choice for clients in core business areas.

GEEXCO Mission

Our missions are to catalyze change to improve the quality of life of beneficiaries and contribute to creating a better world through expertise and engineering and technical assistance to our clients and partners across the world.

GEEXCO core values

Integrity: We believe that the principles of transparency and competition are the best means to prevent corrupt practices, reward quality and spread equality of business opportunities.



Safeguard: We operate ethically and with integrity, while prioritizing safety and security in all that we do.

Sustainable Vision: we design and implement our clients' projects in paying a particular attention to climate change and sustainable development. Depending upon sustainability principles and considerations, GEEXCO encourage its experts and partners to participate in earth and future generation protection.



Quality: We constantly strive to ensure the highest quality for each process, together with the related inputs and outputs.

Diversity: We are committed to preventing and fighting discrimination of any form and recognize the high value that a diverse workforce brings in providing new perspectives on our approach to service delivery.

Sense of Collaboration: we build diverse teams that connect expertise to create innovative solutions. Furthermore, we develop and celebrate our people, and elevate the communities we touch.

Corporate Social Responsibility: we are continuing by an in-depth commitment to behave ethically and contribute to economic development while improving the quality of life of our workforce and their families as well as of the local community and society in which we are serving.

Anticipation: we understand the complexity of our clients' challenges and help them see further. We grow our business through operational excellence and flawless execution. We transcend the industry by reimagining what is possible – and realizing it.



Over-arching Aim: we create, innovate and add value to the way we live and work in this world. Our staff on the job combined with innovative approaches and products that inspire clients' confidence and trust

Goals: we help our clients in every way possible to become highly competitive by providing services of highest standard and technical excellence organizations.

GEEXCO success key points

Based on a decentralized organizational structure across all disciplines and regions, the company's success is deeply rooted in:

- A strategy process and knowledge management translating latest market developments into action plans for all operational units,
- A flexible staff recruitment and human resource development for a rapid response to market demands,
- A conducive working atmosphere and social commitment confirmed by regular staff surveys,
- A rigorous quality management for core operational processes enhancing project performance and customer satisfaction,
- A solid equity stabilization safeguarding employment and knowhow, and opening up opportunities for further growth,
- An awareness of all staff members that they benefit from the company's success, not only as employees but also as shareholders.

Companies and Unities

Organization

GEEXCO has a decentralized organizational structure across all disciplines and regions. The company's range of business areas results from adapting to market developments. Innovative themes which often extend beyond sector or regional limitations are continuously integrated into the existing GEEXCO portfolio.



GEEXCO is headed by a Managing Director assisted by a Deputy Managing Director. In its set up, the GEEXCO Management Team include seven Technical Departments and four Regional Departments which are completed by five Support Units. Each Department is run by the Head of Department.

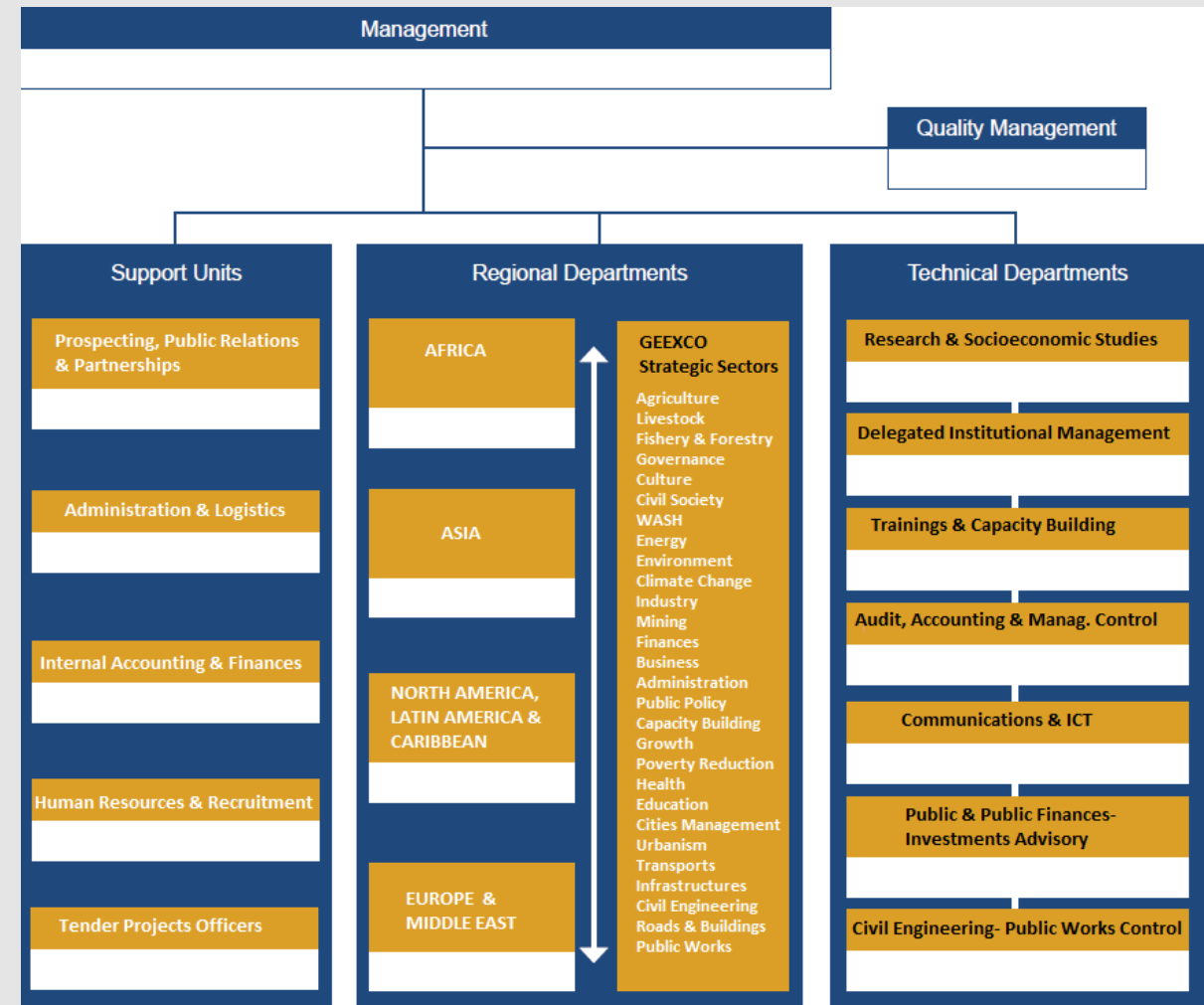
Technical Departments

1. *Research and Socioeconomic Studies Department*
2. *Delegated Institutional Management Department*
3. *Trainings & Capacity Building Department*
4. *External Audit, Accounting & Manag. Control Department*
5. *Communication & ICT Department*
6. *Public/Private Finances and Investments Advisory Department*
7. *Civil Engineering & Public Works Control Department*

Regional Departments

- Regional Department of Africa*
- Regional department of Asia*
- Regional Department of North America, Latin America and Caribbean*
- Regional Department of Europe and Middle East*

GEEXCO Organizational Chart



These Technical Departments and Regional Departments which some are being performed functional, are completed by five Support Units which are the following:

- *Prospecting, Public relations and Partnerships Unit*
- *Administration & Logistics Unit*
- *Internal Accounting & Finances Unit*
- *Human Resources & Recruitment Unit*
- *Tender Project Officers Unit*

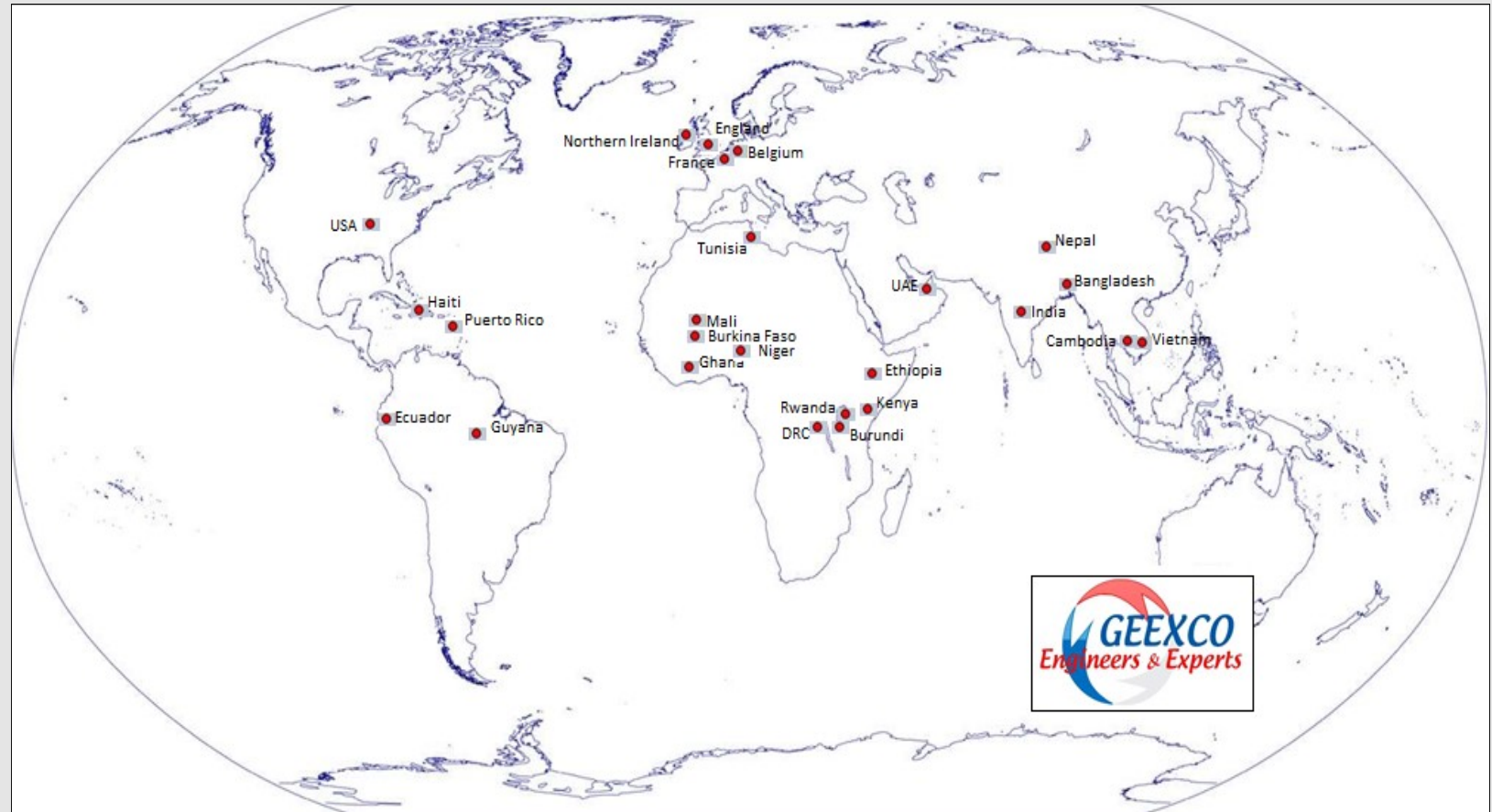
GEEXCO Headquarter & Worldwide

GEEXCO experience worldwide

Despite of the fact that it is young, GEEXCO has benefited from the advantage offered by its geostrategic location to get to the fore front of the international consultancy. The company has since conducted a number of missions in Europe, Africa, Asia and America.

Headquarters and Address

GEEXCO HQ is located at :
6480 New Hampshire, Suites,
201 & 202
Takoma Park MD 20912
Phone #1: +1-301-270-1972
Phone #2: +1-301-270-1974
Fax : +1-301-270-1972
Email: info@geexco.com
Website: www.geexco.com



Jobs – working with GEEXCO

GEEXCO regularly offers employment opportunities in different fields of development cooperation, whether related to projects overseas or to our home offices in USA. In order to ensure a professional and trustful recruitment process, GEEXCO relies on a team of human resources specialists who maintain and enhance reliable working relations with experts worldwide.

Our recruitment team can draw upon a modern IT-based personnel information system including a comprehensive consultant database which enables us to identify and contact eligible experts when opportunities arise within their respective fields of competence. GEEXCO's global reach provides many opportunities for individuals to be involved in a range of projects in our business areas. Please visit regularly our website www.geexco.com for employment opportunities